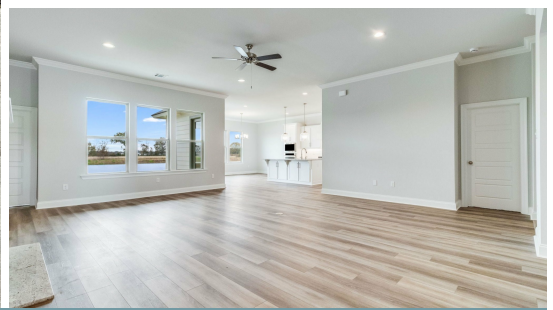
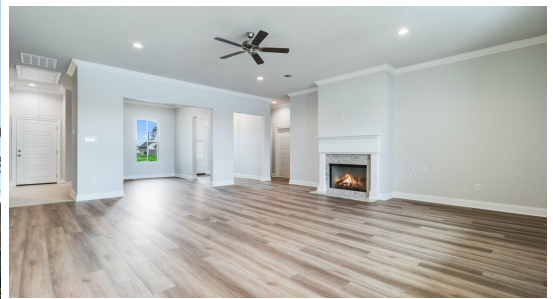
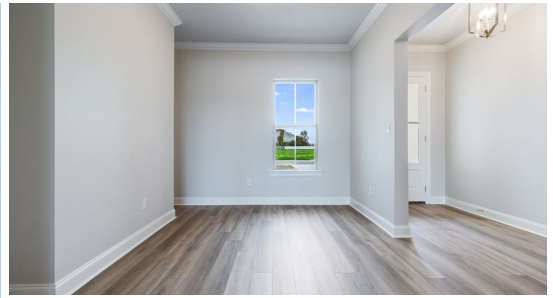


MOVE-IN READY



21410 Yellowfin Drive

2,573
SQ.FT

4
BEDS

3.0
BATHS

80
LOT

\$395,153

Stunning Myrtle floorplan underway in Bruce's Harbor! Our Myrtle floor plan features a grand foyer which opens into the formal dining and great room and are all separated by exposed beams. The great room is centered around a ventless gas log fireplace with wood trim casing, milled mantle and White G granite surround and has views to the large covered patio and backyard. The gourmet kitchen features stainless steel appliances including a 36"-5 burner gas cooktop with single wall oven and built-in microwave, 3 cm White G granite countertops, white subway tile backsplash, painted custom cabinetry with 5" hardware pulls, large center island with sink and 2 overhanging pendant lights and a walk in pantry. Large master suite features a spa-like bath with a custom tiled shower with seamless glass enclosure, separate soaker tub, custom framed mirrors, his and her vanities with 3 cm White G granite, and a large walk-in closet. Three additional bedrooms with walk-in closets and 2 full baths. The yard will be professionally landscaped and fully sodded!



Scott Hornak | 225-396-3668 | onlinesales@levelbr.com

LevelHomesLifestyle.com

The renderings, configurations and information presented is for illustrative purposes only, may not be accurate in every detail, and may contain optional features. All room dimensions and configurations are approximations only. The right to make modifications or changes without prior notice is reserved. This plan is the property of Level Homes and may not be duplicated or modified without expressed permission. New home sales by Keller Williams Red Stick Partners. Each office independently owned and operated.

