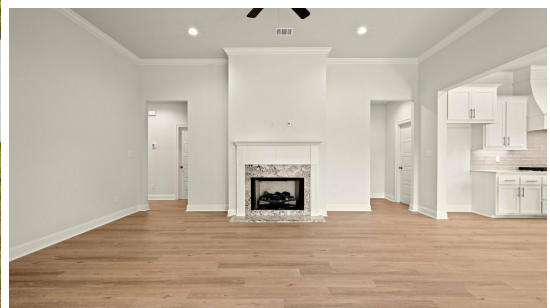


MOVE-IN READY



37510 Cattle Avenue

2,340  
SQ.FT

4  
BEDS

3.0  
BATHS

36  
LOT

**\$454,900**

The Broussard plan is a one-story home featuring four beds and three full baths with an open and spacious layout and just over 2300 sq feet! Enter this home from the very inviting front porch complete with stately columns and a flickering gas lantern. Once inside, you will enter the foyer which leads you into the spacious living room, kitchen, and separate dining. The gourmet kitchen features stainless appliances including a 30" 5 burner gas cooktop, single wall oven and built in microwave, custom painted wood cabinets with 5" hardware pulls and under cabinet lighting, large center island with hanging pendants, 3 cm Lagoon quartz, silver subway tile backsplash, 30" single basin stainless farm sink and a walk-in corner pantry. The master suite is tucked away at the rear of the home with a spa like bath including dual vanities, custom framed mirrors, separate tub and custom job-built shower and a HUGE walk-in closet. Beds 2 and 3 are located off the garage entry and these rooms share a full bath which is located across from the office! Bed four is on the opposite side of the home with a full bath located in the hallway. Large walk-in laundry room with single wall cabinet and a storage closet within. The yard will be professionally landscaped and fully sodded!



Bonnie Plaisance | 225-240-4602 | [onlinesales@levelbr.com](mailto:onlinesales@levelbr.com)

**LevelHomesLifestyle.com**

The renderings, configurations and information presented is for illustrative purposes only, may not be accurate in every detail, and may contain optional features. All room dimensions and configurations are approximations only. The right to make modifications or changes without prior notice is reserved. This plan is the property of Level Homes and may not be duplicated or modified without expressed permission. New home sales by Keller Williams Red Stick Partners. Each office independently owned and operated.

