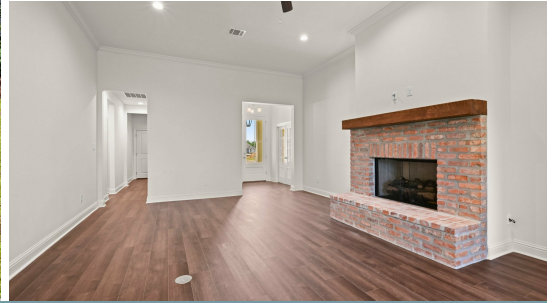


MOVE-IN READY



37401 Cattle Avenue

2,014  
SQ.FT

3  
BEDS

2.0  
BATHS

11  
LOT

**\$410,805**

The Columbus is one story spacious and open plan featuring 3 beds, 2 baths and an office with over 2000 sq ft! Enter through the foyer which opens up to the office and open living. The living room features a vent-less gas fireplace with brick surround, raised hearth and stained beam mantle and has views of the dining room and large covered rear porch. The gourmet kitchen is located off of the dining area by a stained exposed beam and features custom painted cabinets with 5" hardware pulls, large center island with sink and overhanging pendant lights, 3 cm Moonlite granite, custom tile backsplash, stainless appliances including gas cooktop and single wall oven and a walk in corner pantry. Large master suite is located off the rear of the home and features a spa like bath with separate tub and a job built tiled shower, dual sinks and spacious walk in closet! Beautiful vinyl plank wood flooring throughout living areas and office, plush carpet in all bedrooms and oversized tile in wet areas. Spacious mudroom located off of the garage entry with room for an "optional" mud bench or built in desk area.. The yard will be professionally landscaped and fully sodded.



Bonnie Plaisance | 225-240-4602 | [onlinesales@levelbr.com](mailto:onlinesales@levelbr.com)

**LevelHomesLifestyle.com**

The renderings, configurations and information presented is for illustrative purposes only, may not be accurate in every detail, and may contain optional features. All room dimensions and configurations are approximations only. The right to make modifications or changes without prior notice is reserved. This plan is the property of Level Homes and may not be duplicated or modified without expressed permission. New home sales by Keller Williams Red Stick Partners. Each office independently owned and operated.

