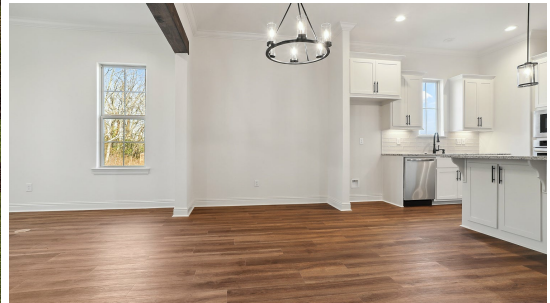


MOVE-IN READY



12115 Clare Court

2,325
SQ.FT

3
BEDS

2.5
BATHS

17
LOT

\$449,900

Marion C plan by Level Homes underway in the cul-de-sac of Clare Court, located off of Cornerview in Geismar! This two story home is over 2300 sq feet with three bedrooms and two and a half baths plus an office. Enter the home into the foyer which opens to the office. The kitchen, dining and living room are open and have views to the large covered rear porch and backyard. The gourmet kitchen will feature custom painted cabinets with 5" hardware pulls and under cabinet lighting, large center island with overhanging pendant lighting, stainless appliance package with gas cooktop, Alaska White granite and a custom white tile backsplash and a walk in pantry. The master bedroom is located off of the rear of the home with a spa like bath with dual vanities, framed mirrors, separate tub and custom job built shower with seamless glass enclosure a HUGE walk in closet. There is a spacious laundry room, mud room w/ space for an optional mudbench and the half bathroom located off of the garage entry. Upstairs will feature two bedrooms with walk in closets, a hall bath and spacious loft area. The yard will be professionally landscaped and fully sodded.



Alicia Wilson | 225-263-6589 | onlinesales@levelbr.com

LevelHomesLifestyle.com

The renderings, configurations and information presented is for illustrative purposes only, may not be accurate in every detail, and may contain optional features. All room dimensions and configurations are approximations only. The right to make modifications or changes without prior notice is reserved. This plan is the property of Level Homes and may not be duplicated or modified without expressed permission. New home sales by Keller Williams Red Stick Partners. Each office independently owned and operated.

