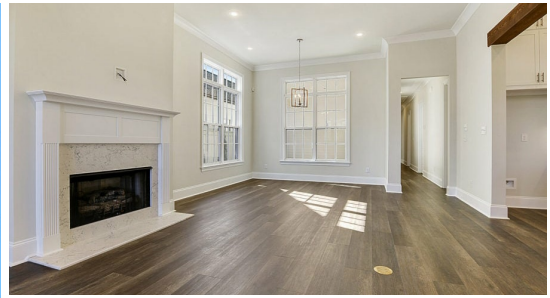


ESTIMATED COMPLETION NOV 2024



14126 Dial Drive

2,094  
SQ.FT

3  
BEDS

2.5  
BATHS

48  
LOT

**\$509,999**

The Juliette is a one-story home featuring three bedrooms, two full baths, a powder room and an office with right over 2000 sq feet of living. Enter this New Orleans cottage style home off the bricked steps onto the lovely covered front porch with hanging gas lantern into large open living, dining and kitchen. The office is located off the living room and lets in tons of natural light. The gourmet kitchen features custom painted cabinets with 5" hardware pulls and under cabinet lighting, stainless appliances including a gas cooktop, single wall oven and built in microwave, a "back" kitchen with a pocket door for full enclosure, Cloud White quartz on all surfaces, 4x4 white tile backsplash, large center island with undermount stainless chef sink and two hanging pendants and a walk-in corner pantry. This is a split floor plan with the master bedroom located at the rear of the home and beds two and three on the opposite side with a shared "jack and jill" bath. The master bedroom is spacious with French doors that lead you into a spa like bath with a HUGE 6-foot soaking tub, separate custom tiled shower with glass enclosure, dual vanities, framed mirrors and an extra-large master closet! The walk in laundry room is spacious with a linen closet and built in double wall upper cabinets. The mudroom off the garage entry has a coat closet and space for an "optional" mud bench. Spacious covered side porch/courtyard will be plumbed for a gas grill and is perfect for entertaining!! The yard will be professionally landscaped and fully sodded.

\*The completed pictures are not of the actual home but are of the same floorplan; colors and options may vary.



Madylin Travieso | 225-314-8942 | [onlinesales@levelbr.com](mailto:onlinesales@levelbr.com)

**LevelHomesLifestyle.com**

The renderings, configurations and information presented is for illustrative purposes only, may not be accurate in every detail, and may contain optional features. All room dimensions and configurations are approximations only. The right to make modifications or changes without prior notice is reserved. This plan is the property of Level Homes and may not be duplicated or modified without expressed permission. New home sales by Keller Williams Red Stick Partners. Each office independently owned and operated.

