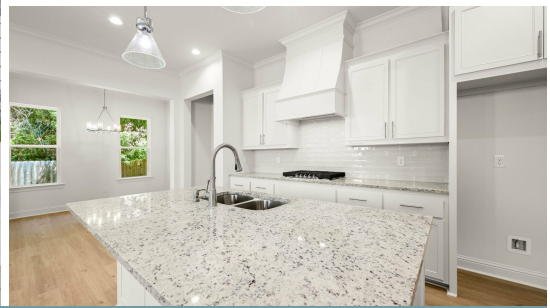
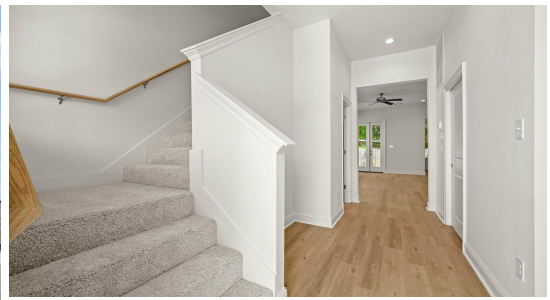


MOVE-IN READY



8921 Magnolia View Drive

2,310
SQ.FT

4
BEDS

2.5
BATHS

3
LOT

\$399,910

The Azalea floor plan is a two story home with 2310 sq feet of living space with four bedrooms, two and half bathrooms and a spacious bonus room. Enter this home from the covered front porch into the open foyer / hall with the staircase that leads to the upstairs. The kitchen and living room are open and the dining room sits off of the kitchen and has views to the backyard. The gourmet kitchen features custom painted cabinets with under cabinet lighting and 5" hardware pulls, large center island with sink and hanging pendant lights, stainless appliances including gas cooktop and wall oven, Moonlite 3 cm granite, white subway tile backsplash and a walk in pantry! The master suite is very spacious and sits off of the rear of the home for privacy! You will enter the spa like master bath with features such as dual vanities, framed mirrors, soaking tub, separate shower and a HUGE walk in closet! There is a powder room, walk in laundry room and drop zone located off of the foyer / garage entry. Upstairs will have three bedrooms, full bath with dual vanities and a large open bonus room. The yard is professionally landscaped and fully sodded.



Scott Hornak | 225-230-5856 | onlinesales@levelbr.com

LevelHomesLifestyle.com

The renderings, configurations and information presented is for illustrative purposes only, may not be accurate in every detail, and may contain optional features. All room dimensions and configurations are approximations only. The right to make modifications or changes without prior notice is reserved. This plan is the property of Level Homes and may not be duplicated or modified without expressed permission. New home sales by Keller Williams Red Stick Partners. Each office independently owned and operated.

